

# PEI Woodlot Owners

Welcome to the sixth issue of the PEI Woodlot Owners Association newsletter, a service to our membership, providing them with information to help make informed choices about their woodlots but also to connect woodlot owners around the Island and help share ideas among themselves.

This issue will cover the topics of technology and world events and how they impact woodlot owners on the Island. We hope you enjoy this edition and are always happy to hear your comments.

## A fast changing world

Dear members

The world seems to be moving at a quicker pace these days with many of us wondering what the future of our children and grand children will hold. From issues of climate change and population growth to rising prices of commodities and thus the cost of living, we sometimes long for a simpler time but know that those days are in the past, and we must start adapting to the world we live in. I take solace in the fact that throughout history this same story has been repeated again and again, each time humanity found away to move forward, but not without some aches and pains.

We know that before the original Acadian settlers arrived here, the Island was almost completely covered with forest of a size and age that would boggle our imagination, but in the space of 150 years there was less than 20 % left. That is why many of the forests that are scattered across the Island are flat and have stone piles and walls throughout them, as they were in some form of agriculture in the past years. Since the end of the shipbuilding days, the forests have returned to cover almost half the land, but of a different age and species makeup. These days on PEI, as in the rest of the world, people are moving away from the land and into the towns and cities, on one side; farms are being consolidated into larger corporations, while the forest industry on the Island is moving to more small scale operations that are in balance with its size.

The point is, change is inevitable and doesn't have to be negative, there are always positive elements to every equation and it is mostly attitude that can help us to find solutions, and by using our technology in constructive and creative ways we can assure that the legacies we have worked hard to create can be passed on and continued by our next generations

In closing I would like to thank the PEI Model Forest for their financial and in kind support over the last year, these generous contributions has played an important role in the development of this association.

Sincerely, Your Chair



### Individual Highlights:

Technology in the woodlot	2
World Events and the woodlot	3
Board members	4
Message to members	5
Links	6

## Technology in the Woodlot

Everyone of those reading this will understand the statement “time marches on”, and with it so does technology, which seems to be marching at an ever increasing pace these days. We live in a world that has an endless supply of knowledge at our fingertips; the trick is weeding out the wrong information and being able to apply the right information to the task at hand.

Technology has made it so much easier for us to find information. The internet is probably one of the most widely used bits of technology of the new era. So why not embrace it. This article is typed on a computer, which will be forwarded to someone else, who will edit it and possibly hand it on to another person and finally on to you. It will eventually be part of a newsletter and then posted online on the PEI Woodlot Owners Associations website. Through all of this, not one of us will have any need to actually print a copy. We share information so easily and it can literally be around the world in an instant.

For forest management, which is what we woodlot owners are interested in, the internet has so much offer. If you have a question about something, chances are you can find information online. If it is information about a tree species or an insect you can probably find it. If you are interested in learning more about a particular harvest system or looking for information about a piece of equipment, you can find that too. You can find information about most anything that interests you.

About a year ago, one of our members Sid Watts started a Blog online about his woodlot. He started the Blog, in part, to use it as a teaching tool for others to read and hopefully gain some information. But he also uses the blog to talk about his passion for the woods and how he pursues that interest.

By following his stats he can see which country people come from, and when they looked at the blog. Some people will leave a comment or perhaps even a question. This is just one way of sharing knowledge and interests with others. Sid looks at it as simply his point of view and a point of discussion or thought for others. If you are interested you can see the blog at:

**<http://wattstreefarmpei.wordpress.com/>**

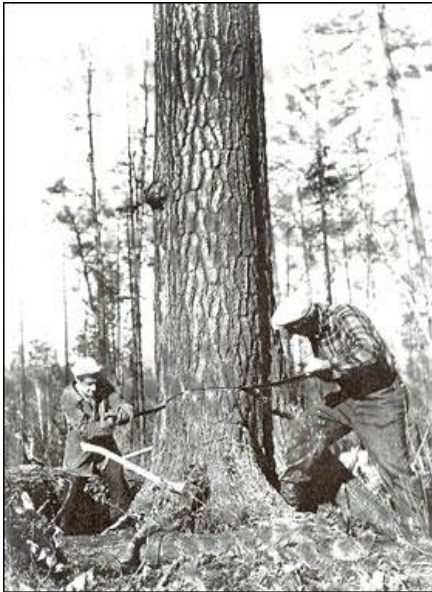
You can get an aerial view of your woodlot through Google earth or at PEI Land on Line (<http://142.176.0.108/landonline/login.aspx>). These can be useful when you are preparing your management plan. It helps to have a “bird’s eye view” of your woodlot to help you put things in perspective.

Another useful tool is a GPS or Global Positioning System unit. We’ve seen them in our cars but there are also hand held units that can be useful in the woodlot. There is no question that the use of technologies can help all of us improve our ability to manage our own woodlots. Who knows what lies ahead or just around the corner. Perhaps we will be able to have our management plans online and be interactive. Perhaps instead of a technical or professional person coming out to meet us we may see them and talk to them on Skype or some other visual online media. There will be times we want to see them in person but to use their time more wisely we may be able to see them and get a better understanding through a visual media.

One other useful tool that may return is a virtual wood yard for PEI. There was a website a few years ago which allowed people access to a broad base of other likeminded people for buying and selling or looking for or providing services. People with standing trees for sale could advertise them for free. Others who had or wanted a piece of equipment could also post their request. It was interesting just to see what was out there. The internet can be a place to actually bring people together



## World Events and your Woodlot



We may think that our tiny island is unaffected by what goes on in the rest of the world. Nothing could be further from the truth. From the very beginning of European settlement the outside demand or lack of demand, has shaped PEI's forests. Many of you know that there was a tremendous ship building industry in PEI's early days. But most of those ships were not for use in or around PEI. They were built here, filled with lumber, and sailed across the ocean and sold. There is probably a lot of PEI wood in many homes in Europe to this very day.

Wars have played a major role in the demand for wood products from PEI. There are well documented stories of the tallest and the best trees being claimed by the "Crown" to be used in warships for England. Trees that could be used for ships masts were some of the most valuable trees in the forest at the time. During the American Revolution there was a demand for grain to feed the horses of the Calvary in the United States. Land was cleared in PEI and grain shipped south to support the war effort. During the first and second world wars there was demand for wood as well. A lot of "pit props" for mines were cut in PEI and shipped away. No doubt, there was some Island lumber in the many trenches built in Europe during both of these wars.

Following World War Two there was a heavy demand for newsprint and although PEI never had a pulp mill there were several within driving or shipping distance. Wood as a fuel was common through most of PEI's history, yet began to diminish as oil became abundant. Then as the price of heating oil went up in the 1970's and 80's, wood was once again a major fuel source to heat many Island homes.

The proximity to the United States has been a very big influence on the demand for lumber. In the first part of this century America was building homes at an unprecedented rate, and the demand in America was once again reaching into PEI's forests. Mills throughout the Maritimes, including PEI were running at or near capacity. The demand was so strong that it was putting a strain on the sustainability of this level of harvesting. But as we all know the "housing bubble" in America had burst and demand disappeared overnight. The forests are taking a bit of a rest right now, perhaps too much of a rest for some of us, these days the demand for wood seems to be at a very low point, but as history has shown us, this will not last.

We can have more control over the quality of the products we produce, instead of waiting for the next big demand for high volume and low value; we can begin to take steps to create higher value trees and to make room for value added businesses that require quality, not quantity. But even these businesses will need off Island markets in order to grow to a size that will utilize continuous supplies of logs. Yes we can have some influence on the type of forest we have but we will always be driven to some extent by world events that are not in our control.



## Board Members Biographies

The Board of Directors, responsible for the day to day business of this association is a group of dedicated volunteers, who share our memberships concerns and passions regarding their woodlots. These individuals are:

**Bruce Craig**- Chair: Bruce is President of Craig Construction and Cabinet Making Ltd. He co-owns 155 acres of woodland in the Northam area with his two brothers.

**Lawrence Millar**-Vice Chair, Heatherdale, Co-owns (with his wife) approximately 20 hectares of which 2/3rds is wood land with plantation and natural mixed stands.

**Ira Smith** – Board member: Ira is a retired public servant, and owns several woodlots in the Freeland/Lot 11 area of PEI.

**John Rowe**- Secretary: John J. Rowe is a retired educator who grew up on the family farm on PEI. He owns several woodlots in Queens and Kings Counties and has been involved with their management plans for over thirty years.

**Leonard Kelly**- Board member: Lives in Bangor.

**John Keuper**- Board member: Lives in Wood Islands.

**Cyrus Bernard**- Board Member: Cyrus is a horse logger, he lives in Tignish.

### *Would You Like To Join?*

**Membership in the PEIWOA is open to any person who has obtained the age of 18 years and owns a woodlot of one hectare or more on Prince Edward Island.**

Joining the PEIWOA is easy as filling out the attached form and mailing it along with a \$40.00 Cheque for a 2 year subscription or \$25.00 for 1 year to the Prince Edward Island Woodlot Owners Assn. 81 Prince St. Charlottetown PE. C1A-4R3

**E-mail [peiwoodlotowners@gmail.com](mailto:peiwoodlotowners@gmail.com)**

**Or you can contact Greg Ridgway at 621-0957 or 620-9774.**



	<p><b>Name:</b> _____</p> <p><b>Address:</b> _____</p> <p><b>Phone:</b> _____</p> <p><b>Email:</b> _____</p>
--	--

## Fall is coming

I know many of you look forward to the end of summer and those cool and colourful fall days were many woodlot owners head out to their woodlots for firewood or just to putter around in that peaceful fall air, whatever the case we are looking forward to our fall line-up which will include our woodlot tours as well as other events that are still in the organising stage, we will keep you posted on all these things as well as new and Informative topics in our newsletters



## Links to Other Island Associations

### PEI Woodlot Owners Association

81 Prince St  
Charlottetown PE  
C1A-4R3

OFFICE:  
902-621-0957

CELL:  
902-620-9774

peiwoodlotowners@gmail.com  
www.peiwoa.drupalgardens.com

[www.peiforests.ca](http://www.peiforests.ca)

[peiwatershedalliance.org/](http://peiwatershedalliance.org/)

<http://www.gov.pe.ca/environment/buffer-zones>

<http://www.gov.pe.ca/forestry/FEP>

---

We are a new organization and are interested in forming networks with organizations interested in preserving and enhancing the integrity of our Island forests, if you are a member of an organization that you feel would benefit from a network with us let us know.

---

## MISSION STATEMENT



The PEI Woodlot Owners Association (PEIWOA) is an inclusive organization that will provide the private woodlot owners of Prince Edward Island with sound advice and practical information to let them make the best choices for their woodlot. We will accomplish this objective by working closely with the membership to identify and pursue the issues of concern relating to the forests of PEI, encompassing the economic, environmental and legal aspects of ownership as well as representing members on the Provincial and National stage.

By forging connections between woodlot owners and all other members of PEI's forest communities the PEIWOA will create new and exciting partnerships, and help to develop the frame work for the future of PEI's forest lands.